

### METAL FINISH



101 White 103 Anthracite 104 Taupe 117 Wenge 118 Warm Grey

*\*Powder Coated(mat) strengthened against rusting and scratches with cataphoresis application.*

### CORD FINISH



Stone Taupe Anthracite Marine Sunset Forest

Net Weight

Gross Weight

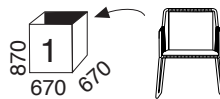
Max. stacking

Cardboard Packaging

Shipment Details

(kg)  
5.30

(kg)  
8.40



20' : 66 pcs.  
40' : 150 pcs.  
40HC : 162 pcs.  
100cbm : 180 pcs.

### Cleaning & Maintenance

Should be cleaned with detergent and a soft damp cloth. Should not be cleaned with abrasive chemicals. No periodic maintenance required.

### Product Quality Certificate



ISO 14001 ENVIRONMENTAL MANAGEMENT SYSTEM  
ISO 45001 OCCUPATIONAL HEALTH and SAFETY MANAGEMENT SYSTEM  
ISO 9001 QUALITY MANAGEMENT

### GROUP A

#### NATTE BY SUNBRELLA

##### Environmental Certificates

Certified Greenguard

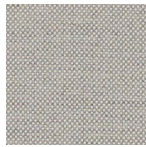
Oeko-Tex Standard 100



10022 GREY CHINE



10063 CHARCOAL CHINE



10152 GRAUMEL CHALK

### GROUP B

#### NEST BY RECASENS

##### Environmental Certificates

Phthalate free

Certified Greenguard

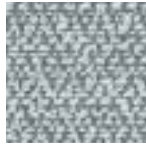
Oeko-Tex Standard 100



NTSFAB Snow



NTSFAB Argent



NTSFAB Titanium

### GROUP C

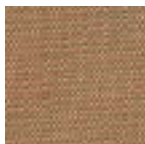
#### ETERNAL BY RECASENS

##### Environmental Certificates

Phthalate free

Certified Greenguard

Oeko-Tex Standard 100



ETFAB Phoenix



ETFAB Tapenade



ETFAB Vulcano

### GROUP C

#### PANAMA BY AGORA

##### Flame Resistance Certificates

UNE 1021 PARTS 1-2 IMO PEF 2010 Anex 1. Part 8 BS 5852 Cigarette & Match



03658 CLOUD



08013 GRAFITO



03659 FOSSIL



08004 MENTA



%100  
SOLUTION  
DYED  
ACRYLIC



SOFT  
TOUCH



OUTDOOR  
USAGE

### GROUP C

#### NOBLESS BY RECASENS

##### Environmental Certificates

Phthalate free

Certified Greenguard

Oeko-Tex Standard 100



NBLFAB Argent



NBLFAB Titanium



NBLFAB Storm



%100  
SOLUTION  
DYED  
ACRYLIC



SOFT  
TOUCH



OUTDOOR  
USAGE