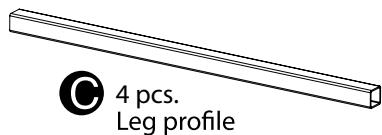
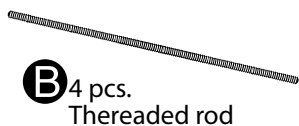
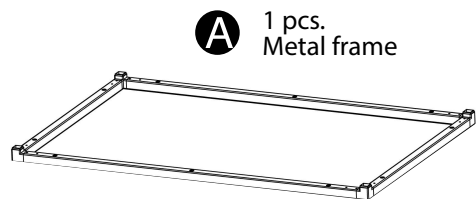
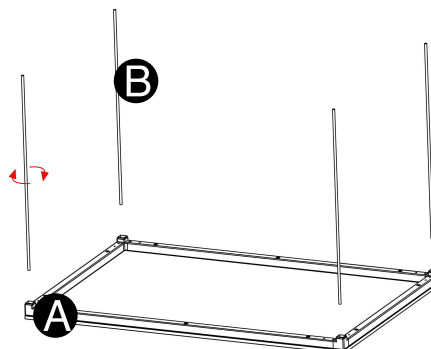


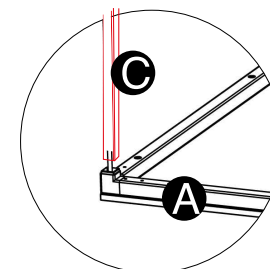
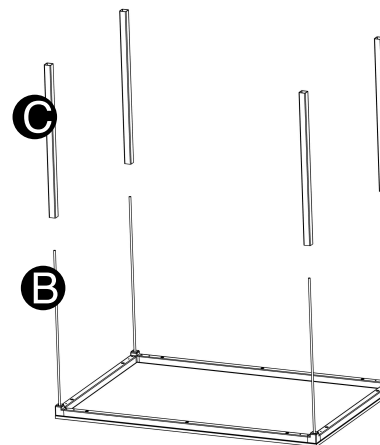
### Material Identification



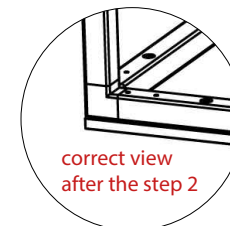
- 1** Locate threaded rod (B) by rotating of the metal frame (A)



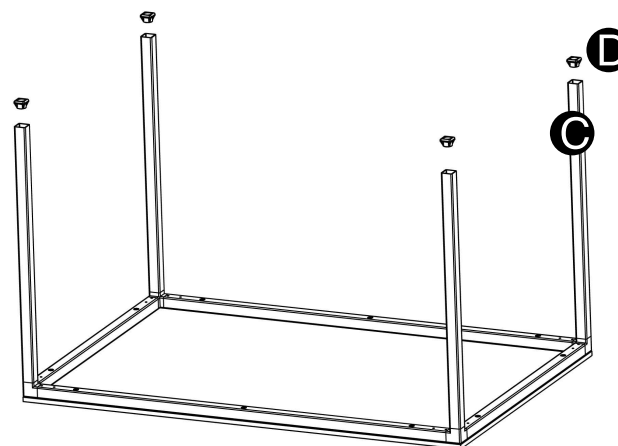
- 2** Locate the metal legs (C) on the threaded (B)



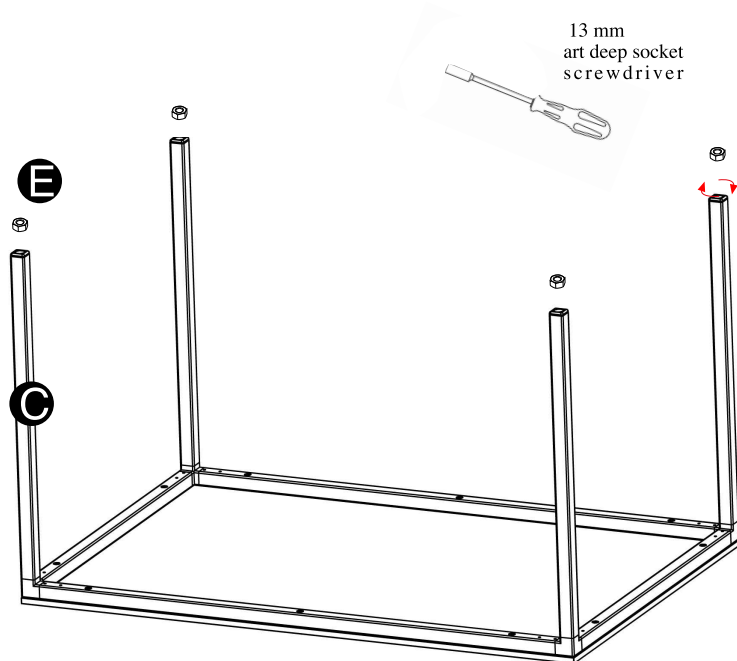
**!**  
Attention  
Metal legs (C) should be  
locked on the corner part.



- 3** Locate the foot support (D) into the metal legs (C)



- 5** Locate the round nuts (E) on the foot support (D) the tighten by using art deep socket screwdriver (13mm) in direction of arrow.



- 6** Finally locate the foot inserts and press until totally fix.

